



**AUGUST 28-30, 2026**

WILLIAMSBURG LODGE • WILLIAMSBURG, VA



# 2026

## ACG'S OBESITY AND METABOLIC DISORDERS SCHOOL & ACG/VGS/MASGNA REGIONAL POSTGRADUATE COURSE

ACG'S OBESITY AND METABOLIC DISORDERS SCHOOL

EARN UP TO **15.75 CME CREDITS** | EARN UP TO **15.75 MOC POINTS**

ACG/VGS/MASGNA REGIONAL POSTGRADUATE COURSE

EARN UP TO **10.25 CME CREDITS** | EARN UP TO **10.25 MOC POINTS**



Celebrate America's Semiquincentennial in historic Colonial Williamsburg!

**NEW!** Applicants for certification through the American Board of Obesity Medicine (ABOM) may claim up to 15.75 GROUP TWO CME credits toward the ABOM application requirement for completion of ACG's Obesity and Metabolic Disorders School.

2026

# ACG'S OBESITY AND METABOLIC DISORDERS SCHOOL & ACG/VGS/MASGNA REGIONAL POSTGRADUATE COURSE

Mark your calendar and join your colleagues for ACG's Obesity and Metabolic Disorders School & ACG/VGS/MASGNA Regional Postgraduate Course, August 28-30, 2026, in Williamsburg, VA.

By attending these programs, you will gain a deeper understanding of the common and not-so-common disorders encountered in GI practice.

Step back in time and explore U.S. history in the charming area of Colonial Williamsburg, which is just steps from the Williamsburg Lodge, a Marriott Autograph Collection hotel. Colonial Williamsburg features several hundred restored and reconstructed buildings set on a 300-acre historic site. As a guest of the Lodge, you will enjoy discounts on admission passes to Colonial Williamsburg's historic area, free area shuttle service, preferred reservations for dining at Colonial Williamsburg taverns and restaurants, preferred reservations for the Golden Horseshoe Golf Club and the spa, access to three pools and the fitness center, and more than 40 shops within walking distance.

➔ Plan your visit to Colonial Williamsburg at [colonialwilliamsburg.org](https://colonialwilliamsburg.org).



Register by July 28 and Save:  
**MEETINGS.GI.ORG**



# AUGUST 28-30, 2026

WILLIAMSBURG LODGE • WILLIAMSBURG, VA

## PROGRAM DESCRIPTION

### ACG's Obesity and Metabolic Disorders School

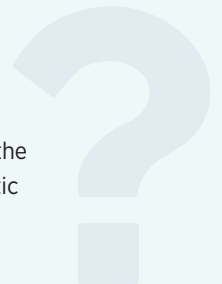
Led by Course Directors A. Sidney Barritt, IV, MD, MSCR, FACG, and Catherine T. Hudson, MD, MPH, DABOM, ACG's Obesity and Metabolic Disorders School, offered on Friday, August 28, is a day-long interactive educational program combining the complexities and rapidly evolving options for medical and endoscopic management. Given the challenging realities of patient management for obesity and metabolic disorders, with its intensive evaluation and consultation requirements, the College aims to help GI and hepatology practices coordinate care effectively, promote adherence to therapy, and ultimately optimize patient outcomes.

### ACG/VGS/MASGNA Regional Postgraduate Course

The ACG/VGS/MASGNA Regional Postgraduate Course will be offered all day Saturday and a half-day Sunday, with an agenda that features presentations on upper GI disorders, GI autoimmunity, IBD, hepatology, gut-brain interaction, and therapeutic endoscopy. ACG President, William D. Chey, MD, MACG, will deliver the Keynote Lecture where he will discuss whether IBS is a gut microbiome-based disorder. The program will also feature a special MASGNA-sponsored session on Saturday afternoon, as well as fellows' case presentations illustrating difficult GI management issues.

### WHO SHOULD ATTEND

These programs are designed for gastroenterologists, gastroenterology trainees, primary care physicians, nurses, physician assistants, nurse practitioners, and other members of the health care team interested in the latest information on diagnostic GI and state-of-the-art treatment of GI illnesses.



## COURSE DIRECTORS:



A. SIDNEY BARRITT, IV, MD, MSCR, FACG



CATHERINE T. HUDSON, MD, MPH, DABOM

## FRIDAY, AUGUST 28, 2026

7:00 am Registration and Continental Breakfast

7:50 am **Welcome and Introductions: Why Is the Obesity and Metabolic School in Session?**  
*A. Sidney Barritt, IV, MD, MSCR, FACG, and Catherine T. Hudson, MD, MPH, DABOM*

8:00 am **The Metabolic Road Map for Modern GI Practice**  
*Catherine T. Hudson, MD, MPH, DABOM*  
Describe the historical evolution of obesity and metabolic syndrome as distinct but overlapping diseases, and identify the role of gastroenterologists and hepatologists in managing obesity within various practice models.

### SESSION 1: Understanding Obesity as a Disease

*Moderator: Catherine T. Hudson, MD, MPH, DABOM*

8:30 am **Genetics, Environment, and Judgment: The Science (and Stigma) of Obesity**  
*Pichamol Jirapinyo, MD, MPH, FACG, DABOM*  
Explain genetic and environmental contributors to obesity pathophysiology and discuss how stigma impacts access, outcomes, and provider behavior.

8:50 am **More Than a Number: Diagnosing Obesity Beyond BMI**  
*Shelby A. Sullivan, MD, FACG*  
Interpret limitations of BMI and identify complementary measures of adiposity. Outline appropriate screening for comorbidities and behavioral health integration.

9:10 am **Scaling Success: Lifestyle Foundations for Long-Term Weight Health**  
*Carolyn A. Newberry, MD, DABOM*  
Summarize evidence-based lifestyle interventions for weight management and apply motivational interviewing techniques to improve adherence.

9:30 am **Q & A / Panel Discussion**

9:50 am **Break**

### SESSION 2: Treating Obesity and Metabolic Dysfunction

*Moderator: Pichamol Jirapinyo, MD, MPH, FACG, DABOM*

10:10 am **Gut Instincts: Hormones That Shape Metabolism**  
*Sergio Sanchez-Luna, MD*  
Describe the role of foregut and hindgut signaling in appetite and energy balance, and explain how surgical and endoscopic procedures modify gut hormones.

10:30 am **Endo-Game: The Expanding Role of Endobariatric Therapies**  
*Pichamol Jirapinyo, MD, MPH, FACG, DABOM*  
Identify primary endoscopic bariatric interventions and revision techniques, and compare gastric versus small bowel targets for weight and metabolic benefit.



**10:50 am Inside Out: The GI Endoscopist's Role in Bariatric Surgery Complications**  
*Sergio Sanchez-Luna, MD*  
Explain common post-bariatric complications and endoscopic management strategies, and explain stenting, endovac, dilation, and nutritional optimization for marginal ulcers.

**11:20 am Beyond the Scale: GLP-1s as Chronic Disease Modifiers**  
*Donna H. Ryan, MD*  
Discuss pharmacology and mechanisms of GLP-1 receptor agonists and related agents, and summarize evidence for GLP-1-based therapies across metabolic, cardiovascular, and neurocognitive domains.

**11:50 am Access Denied? Navigating Coverage, Cost, and Compounding**  
*Shelby A. Sullivan, MD, FACG*  
Consider insurance, PBM, and TROA barriers to GLP-1 access, and discuss ethical and practical considerations in compounding and telehealth models.

**12:10 pm Q & A / Panel Discussion**

**12:30 pm Break / Lunch Provided**

**1:30 pm Fuel and Function: Optimizing Nutrition After Obesity Interventions**  
*Neha Dilip Shah, MPH, RD, CNSC, CHES*  
Identify common micronutrient deficiencies post-bariatric or GLP-1 therapy, and explain the role of protein and resistance training in preserving lean mass.

### **SESSION 3: Metabolic Dysfunction and the Liver**

*Moderator: A. Sidney Barritt, IV, MD, MSCR, FACG*

**1:50 pm MASLD: The Epidemic Hiding in Plain Sight**  
*A. Sidney Barritt, IV, MD, MSCR, FACG*  
Describe the epidemiology and global burden of MASLD and MASH in patients with obesity and metabolic dysfunction.

**2:10 pm New and Emerging Pharmacotherapy for MASLD/MASH**  
*Cynthia Moylan, MD, MHS*  
Identify the mechanisms and clinical trial data for newly approved and late-stage investigational pharmacotherapies targeting MASLD/MASH.

**2:30 pm The Impact of Nutrition and Metabolic Syndrome on Liver Disease: Beyond MASLD**  
*A. Sidney Barritt, IV, MD, MSCR, FACG*  
Explain the role of sarcopenic obesity, frailty, and metabolic syndrome in the progression of chronic liver disease and cirrhosis.

**2:50 pm Q & A / Panel Discussion**

**3:10 pm Break**

### **SESSION 4: Obesity and Metabolic Dysfunction in a GI Practice**

*Moderator: Millie D. Long, MD, MPH, FACG*

**3:30 pm Inflamed and Overfed: Managing Obesity in IBD**  
*Millie D. Long, MD, MPH, FACG*  
Discuss the impact of obesity on IBD activity and outcomes, and evaluate the safety and efficacy of GLP-1s and bariatric interventions in IBD.

**3:50 pm Under Pressure: GERD, Surgery, and GLP-1s in Obesity**  
*Carolyn Newberry, MD, DABOM*  
Explain the bidirectional relationship between obesity and reflux disease, and identify surgical and pharmacologic management strategies for reflux in high BMI patients.

**4:10 pm Speed Up—Slow Down: Dysmotility Across the Obesity Spectrum**  
*Baharak Moshiree, MD, MSc, FACG*  
Describe dysmotility patterns following bariatric procedures and GLP-1 therapy, and review management of dumping, gastroparesis, and candy cane syndrome.

**4:30 pm The Road Ahead: Collaboration, Combination, and Compassion**  
*Donna H. Ryan, MD*  
Summarize the multidisciplinary approach to obesity and metabolic dysfunction, and identify opportunities for advocacy, data collection, and collaborative care models.

**4:50 pm Q & A / Panel Discussion**

**5:10 pm Course Wrap-Up and Take-Away Points**  
*A. Sidney Barritt, IV, MD, MSCR, FACG, and Catherine T. Hudson, MD, MPH, DABOM*

**5:20 pm Course Adjourns**

## ADDITIONAL ON-DEMAND

### Content and Live Q&A Session Included With Registration

In addition to the August 28 in-person program in Williamsburg, all Obesity School registrants will also receive access to the eight on-demand lectures below (each 45-minutes in length) and have the option to attend a live online Q&A session on Saturday, September 26 (10:00am-12:15pm ET) featuring the faculty below.

Attendees can submit questions to the faculty during the Q&A session, and are encouraged to watch the recordings prior to the session. The Q&A session provides an additional 2 hours of CME and MOC credits.

Online Q&A sessions will be held twice, on Saturday, September 26, and on Saturday, January 9, 2027. Williamsburg registrants unable to attend the September session will also have the option to attend in January.

#### Q & A HOUR 1 WILL COVER THE FOLLOWING TALKS:

*Moderator: A. Sidney Barritt, IV, MD, MSCR, FAGG*

##### **Meds, Endoscopy, and Surgery: Combination and Sequential Therapies for Obesity Treatment**

*Christopher C. Thompson, MD, MSc, FAGG*

Identify evidence supporting combination and sequential approaches to obesity treatment, discuss clinical decision-making regarding timing of medications before or after procedures, and explain strategies for defining treatment failure and managing weight plateau or regain.

##### **Endoscopic Management of Bariatric Surgery Complications: GI to the Rescue**

*Catherine T. Hudson, MD, MPH, DABOM*

Discuss the gastroenterologist's role in preoperative assessment and postoperative complication management, describe endoscopic tools and techniques used to manage leaks, fistulas, strictures, ulcers, and altered anatomy, and review multidisciplinary approaches for optimizing outcomes and reducing reoperation rates.

##### **Sarcopenic Obesity and Micronutrient Deficiencies**

*Lindsey Russell, MD, MSc, CNSC*

Explain the pathophysiology and clinical significance of sarcopenia in patients with obesity and liver disease, identify risks for protein-calorie and micronutrient deficiencies associated with pharmacologic and procedural weight loss therapies, and discuss prevention and treatment strategies, including resistance training and targeted supplementation.

##### **Opening the Floodgates: The Pharmacological Pipeline for the Treatment of Obesity and Metabolic Liver Disease**

*Naim Alkhouri, MD, DABOM*

Identify emerging drug classes targeting obesity and steatotic liver disease beyond incretin mimetics, explain mechanisms of action, efficacy, and safety of multi-agonist and muscle-sparing therapies, and discuss how gastroenterologists can integrate forthcoming agents into clinical and research practice.

#### Q & A HOUR 2 WILL COVER THE FOLLOWING TALKS:

*Moderator: Catherine T. Hudson, MD, MPH, DABOM*

##### **The Role of the Microbiome in Obesity and the Impacts of Obesity Treatment**

*Ali Rezaie, MD, MSc, FAGG*

Describe mechanisms by which the gut microbiome influences energy balance, inflammation, and metabolism, discuss how obesity treatments—pharmacologic, endoscopic, and surgical—affect microbial composition and function, and explore the therapeutic potential and current limitations of microbiome-targeted interventions.

##### **Redesigning Your GI Practice to Incorporate the Elements Needed to Treat Obesity and Metabolic Liver Disease: Clinical Practice Pearls**

*Pooja Singhal, MD, FAGG, DABOM*

Identify key team members (dietitians, behavioral health, pharmacists) essential for comprehensive obesity care, discuss workflow strategies for integrating metabolic care into a general or subspecialty GI practice, and outline best practices for managing prior authorizations and optimizing patient access.

##### **Incorporating Counseling for Lifestyle Modifications Into Your Busy GI Practice While Reducing Stigma: Clinical Pearls From the Experts**

*Marianna Papademetriou, MD*

Apply practical counseling strategies for lifestyle change within time-limited GI visits, recognize and address weight stigma through person-first language and supportive clinic environments, and develop approaches to foster non-scale goals and patient-centered care.

##### **What to Know When You Are Considering ABOM Certification** (45 minute on-demand lecture)

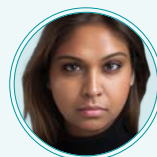
*Meagan E. Gray, MD, DABOM*

Describe the pathway, requirements, and benefits of ABOM board certification, discuss how certification enhances understanding of obesity as a disease and improves patient care, and evaluate whether ABOM certification aligns with individual professional goals and practice needs.

## COURSE DIRECTORS:



DENNIS KUMRAL, MD, FACC



SASHA MANGRAY, MD

## SATURDAY, AUGUST 29, 2026

7:00 am Registration and Continental Breakfast / Visit Exhibit Hall

7:50 am Welcome Remarks and Introductions  
*Dennis Kumral, MD, FACC, and Sasha Mangray, MD*

### SESSION 1: Upper GI and Small Bowel

*Moderator: Dennis Kumral, MD, FACC*

8:00 am How to Diagnose (and Undiagnose) Celiac Disease

*Dennis Kumral, MD, FACC*

Describe the diagnostic work-up for celiac disease based on serologies, need for endoscopic biopsy, and genetic testing.

8:20 am Celiac Disease... Or Not? A Guide to Celiac Mimickers

*Amy S. Oxentenko, MD, MACG*

Identify factors that allow the differentiation of celiac disease from other causes of increased intraepithelial lymphocytes or villous damage.

8:40 am Updates to EoE Treatment

*Joy W. Chang, MD*

Discuss treatment approaches for EoE including newly approved therapies and endoscopic surveillance strategies.

9:00 am Q & A / Panel Discussion

9:25 am Break / Visit Exhibits

### SESSION 2: Inflammatory Bowel Disease

*Moderator: Sasha Mangray, MD*

9:55 am Optimizing Therapy Selection for Ulcerative Colitis

*David T. Rubin, MD, FACC*

Outline individualized ulcerative colitis therapies based on disease severity, patient phenotype, and treatment goals for achieving mucosal healing and sustained remission.

10:15 am Management of the Complicated Crohn's Patient

*Millie D. Long, MD, MPH, FACC*

Identify tools available for evaluating and treating complicated Crohn's disease.

10:35 am Precision Medicine in IBD: Where Are We Now?

*Raseen Tariq, MBBS*

Describe how genetic, molecular, and clinical biomarkers are being integrated to personalize treatment selection, predict disease course, and optimize therapeutic outcomes in inflammatory bowel disease.

10:55 am Q & A / Panel Discussion

11:20 am Keynote Lecture: Is IBS a Gut Microbiome-Based Disorder?

*William D. Chey, MD, MACG*

Describe the available evidence that may suggest irritable bowel syndrome (IBS) is a microbiome-based disorder and identify evidence to the contrary.

11:50 am Lunch Provided / Visit Exhibits



**REGISTER ONLINE:**  
MEETINGS.GI.ORG

### SESSION 3: Disorders of the Gut-Brain Interaction

Moderator: Dennis Kumral, MD, FACG

- 12:35 pm Integrating Clinical Hypnosis and CBT for IBS: A Case Study of the Gut-Brain Connection in Action**  
*Ali Navidi, PsyD*  
Identify when and how to integrate gut-directed hypnotherapy and CBT as evidence-based adjunctive treatments for IBS patients with persistent symptoms despite optimized medical therapy.
- 12:55 pm Refractory Constipation: Advanced Management Strategies**  
*Satish S. C. Rao, MD, PhD, FACG*  
Discuss the best approach for the utilization of medical therapy for constipation, when to evaluate for pelvic floor disorders, and how to incorporate complementary and alternative therapies such as a vibrating capsule.
- 1:15 pm Non-Pharmacologic Therapy for Gastroparesis: Worth the Hype?**  
*Baharak Moshiree, MD, MSc, FACG*  
Evaluate the evidence and clinical utility of non-pharmacologic interventions (pyloric interventions including botulinum toxin, dilation, G-POEM, and gastric electrical stimulation) in managing gastroparesis symptoms and improving patient outcomes.
- 1:35 pm Q & A / Panel Discussion**
- 2:00 pm Break / Visit Exhibits**

### SESSION 4: Hepatology

Moderator: Sasha Mangray, MD

- 2:20 pm Motivating Lifestyle Change for Metabolic Dysfunction**  
*A. Sidney Barritt, IV, MD, MSCR, FACG*  
Apply evidence-based nutrition, exercise, and other self-care recommendations to address MASLD.
- 2:40 pm Integrating Addiction Medicine in the Management of ALD: How I Do It**  
*Jasmohan S. Bajaj, MD, MS, FACG*  
Describe practical strategies for incorporating evidence-based addiction medicine interventions into the clinical management of patients with alcoholic liver disease.

- 3:00 pm Q & A / Panel Discussion**
- 3:15 pm Fellows' Presentations or MASGNA Nursing Session**

#### Option 1: Fellows' Presentations

Moderator: Neeral L. Shah, MD, FACG

Fellows from the University of Virginia, Virginia Commonwealth University, and Virginia Tech Carilion School of Medicine will present interesting cases highlighting novel or noteworthy diagnosis or treatments.

- 4:30 pm Course Adjourns for the Day**

#### Option 2: MASGNA Nursing Session

- 3:15 pm Genetic Counseling for Hereditary Gastrointestinal Cancer: Lynch Syndrome and Beyond**  
*Berkley Nestler, MS, LCGC*  
Discuss the genetic testing available, what the results may tell us, and what type of support may be needed for patients after they receive their results.
- 3:35 pm The Power of Certification: Building Trust and Professional Authority in Legal Nurse Consulting**  
*Charlotte Timberlake-Torseth, BSN, RN, CGRN, FCN*  
Discuss legal nurse consulting and how certification can help build your professional brand and credibility.
- 3:55 pm SGNA Standards 101**  
*Kelly Osborne, BSN, RN, CGRN and Annette McVey, MSN, RN, CGRN*  
Explore the SGNA standards and how to implement them into your daily practice.
- 4:30 pm Course Adjourns for the Day / Reception with the Exhibitors**

**REGISTER BY  
JULY 28 AND  
SAVE!**



## SUNDAY, AUGUST 30, 2026

- 7:00 am Continental Breakfast /  
Visit the Exhibit Hall
- 7:15 am VGS and MASGNA Board Meetings
- 8:20 am Welcome and Announcements  
*Dennis Kumral, MD, FACG,  
and Sasha Mangray, MD*
- 8:25 am VGS Presidential Welcome  
*Jeffrey P. LaFond, MD, FACG*

### SESSION 5: Therapeutic Endoscopy

*Moderator: Dennis Kumral, MD, FACG*

- 8:30 am **Alvin M. Zfass, MD, MACG Lecture:  
Breaking the Adenoma-Carcinoma  
Sequence – The Role of Polypectomy  
in Colon Cancer Prevention**  
*Douglas K. Rex, MD, MACG*  
Describe how the landmark National  
Polyp Study established polypectomy as  
an effective intervention for colorectal  
cancer and how polypectomy methods  
have evolved over time to improve colon  
cancer prevention.
- 8:50 am **Staging GI Cancers With EUS: What  
the Referring Doctor Needs to Know**  
*Vanessa M. Shami, MD, FACG*  
Identify which GI cancer patients require  
EUS staging and understand how EUS  
results directly influence decisions  
regarding endoscopic resection,  
neoadjuvant therapy, and surgical  
approach.
- 9:10 am **Approach to Complex Strictures of  
the Esophagus and Colon**  
*Bo Shen, MD, PhD, FACG*  
Develop a systematic approach to  
managing complex esophageal and  
colonic strictures with appropriate  
selection of treatment modalities  
including dilation, stenting, and  
stricturoplasty.
- 9:30 am Q & A / Panel Discussion
- 9:50 am Break / Visit the Exhibit Hall

### SESSION 6: GI Potpourri: Selected Topics in Gastroenterology

*Moderator: Sasha Mangray, MD*

- 10:20 am **Beyond the Misty Mesentery:  
Sclerosing Mesenteritis in  
Clinical Practice**  
*Mark T. Worthington, MD*  
Recognize the clinical presentation  
and CT imaging features of sclerosing  
mesenteritis to facilitate early diagnosis  
and appropriate management of this rare  
inflammatory disorder.
- 10:40 am **Enteral Nutrition: A Comprehensive  
Approach to Access, Administration,  
and Managing Complications**  
*John K. DiBiase, MD, FACG*  
Identify appropriate indications for  
feeding tube placement, demonstrate  
knowledge of current placement  
techniques, and implement evidence-  
based strategies for managing common  
complications.
- 11:00 am Q & A / Panel Discussion

### SESSION 7: Endoscopy

*Moderator: Dennis Kumral, MD, FACG*

- 11:10 am **Optimizing Bowel Prep Quality in 2026**  
*Aasma Shaukat, MD, MPH, FACG*  
Assess patient tolerance, safety profiles,  
and patient cost considerations of lower  
volume bowel preparations.
- 11:30 am **AI in GI: Applications in Clinic  
and Endoscopy**  
*Andy Tau, MD*  
Describe how artificial intelligence is  
being integrated into clinical decision-  
making and endoscopic practice to  
improve diagnostic accuracy and patient  
outcomes.
- 11:50 am Q & A / Panel Discussion
- 12:05 pm **Course Wrap-Up and Take-Away  
Points**  
*Dennis Kumral, MD, FACG, and Sasha  
Mangray, MD*
- 12:15 pm Course Adjourns

## REGISTRATION INFORMATION

There are separate registration fees for ACG's Obesity and Metabolic Disorders School and ACG/VGS/MASGNA Regional Postgraduate Course. The registration fee for each course includes admission to all sessions, continental breakfasts, lunch on Friday for Obesity and Metabolic Disorders School attendees, lunch on Saturday for ACG/VGS/MASGNA Regional Postgraduate Course attendees, and refreshment breaks. All registrants must pay the full registration fee; partial registration is unavailable. A full refund of registration fees will be given, less a \$25 administrative fee, if written notice of cancellation is received by ACG by **July 28, 2026**. No refunds will be given after this date. Attendees must register online at [meetings.gi.org](http://meetings.gi.org).

ACG'S OBESITY AND METABOLIC DISORDERS SCHOOL		
ACG MEMBER TYPE	EARLY BIRD (On or Before 7/28)	FEE (After 7/28)
ACG/VGS Physician	\$125	\$175
ACG Resident / Trainee / Candidate	\$125	\$175
Medical Student	\$25	\$25
Associate / Advanced Practice Provider	\$125	\$175
NON-MEMBER TYPE		
Physician / PharmD / PhD / Guest	\$175	\$225
Resident / Trainee	\$175	\$225
Medical Student	\$50	\$50
NP / PA / Allied Health (RN, LPN)	\$175	\$225

ACG/VGS/MASGNA REGIONAL POSTGRADUATE COURSE		
ACG MEMBER TYPE	EARLY BIRD (On or Before 7/28)	FEE (After 7/28)
ACG/VGS Physician	\$299	\$359
ACG Resident / Trainee / Candidate / SGNA Endo Tech	\$149	\$209
Medical Student	\$25	\$25
ACG Associate / SGNA Allied Health	\$169	\$229
ACG Advanced Practice Provider/SGNA NP/PA	\$189	\$249
NON-MEMBER TYPE		
Physician / PharmD / PhD / Guest	\$399	\$459
Resident / Trainee	\$219	\$279
Medical Student	\$50	\$50
NP / PA / Allied Health (RN, LPN)	\$279	\$339

### MOBILE APP INFORMATION

Included with your registration is complimentary access to the course presentations via the **ACG Mobile App**. The app can be used to view faculty presentations on tablets, mobile devices, and laptops. Attendees will be able to take notes and highlight key points on the presentation slides at the event, and can continue reviewing them after the course. PDFs of the presentations can be downloaded directly from the app or can be printed from the website version of the app. Pre-registrants will receive access to the app prior to the course to view, download, or print the presentation slides. **(NOTE: A printed syllabus will not be provided.)**



## ACCREDITATION / CME / MOC:

### ACG's Obesity and Metabolic Disorders School

The American College of Gastroenterology designates this Other activity (blended learning) for a maximum of 15.75 *AMA PRA Category 1 Credits*<sup>™</sup>. Physicians should claim only the credit commensurate with the extent of their participation in the activity.

*AMA PRA Category 1 Credits*<sup>™</sup> are awarded as follows: 13.75 *AMA PRA Category 1 Credits*<sup>™</sup> for the Live and On-Demand Lectures and 2 *AMA PRA Category 1 Credits*<sup>™</sup> for the Online Q & A with the On-Demand Faculty (separate evaluation will be required).



Successful completion of this CME activity, which includes participation in the evaluation component, enables the participant to earn up to 15.75 Medical Knowledge MOC points in the American Board of Internal Medicine's (ABIM) Maintenance of Certification (MOC) program. Participants will earn MOC points equivalent to the amount of CME credits claimed for the activity. It is the CME activity provider's responsibility to submit participant completion information to ACCME for the purpose of granting ABIM MOC credit.

### ACG/VGS/MASGNA Regional Postgraduate Course

This activity has been planned and implemented in accordance with the accreditation requirements and policies of the Accreditation Council for Continuing Medical Education (ACCME) through the joint providership of the American College of Gastroenterology, the Virginia Gastroenterological Society, and the Mid-Atlantic Society of Gastroenterology Nurses and Associates. The American College of Gastroenterology is accredited by the ACCME to provide continuing medical education for physicians.

The American College of Gastroenterology designates this live activity for a maximum of 11.25 *AMA PRA Category 1 Credits*<sup>™</sup>. Physicians should claim only the credit commensurate with the extent of their participation in the activity.



Successful completion of this CME activity, which includes participation in the evaluation component, enables the participant to earn up to 10.25 Medical Knowledge MOC points in the American Board of Internal Medicine's (ABIM) Maintenance of Certification (MOC) program. Participants will earn MOC points equivalent to the amount of CME credits claimed for the activity. It is the CME activity provider's responsibility to submit participant completion information to ACCME for the purpose of granting ABIM MOC credit.

## NURSING CREDITS

This educational activity (2026 ACG/VGS/MASGNA Regional Postgraduate Course) has been submitted for approval to the Georgia Nurses Association, an accredited approver with distinction by the American Nurses Credentialing Center's Commission on Accreditation and American Board of Certification for Gastroenterology Nurses for GI specific contact hour recertification purposes.

## ACCOMMODATIONS

Both programs will be held at the Williamsburg Lodge in Williamsburg, VA. Guests will enjoy Virginia hospitality in the heart of historic Williamsburg. Step outside the hotel and stroll directly into the restored streets of Colonial Williamsburg's Historic Area, browse the shops and dining at Merchants Square, or explore the campus of the College of William & Mary.

To make a reservation, book online at <https://book.passkey.com/e/51210588> or call 800-261-9530.

Special meeting room rates per night are \$269 for a standard guestroom plus taxes (currently 14%, in addition to a \$2.00 occupancy fee per room per night). Room rates include complimentary basic guest room internet and access to the hotel health club.

Reservations must be made by July 28, 2026, to receive the special meeting rate. Only a certain number of rooms are available at this rate and are available on a first-come, first-served basis. Once ACG's room block is sold out, the hotel may charge a higher rate for any additional rooms made available. All reservations require a deposit of one night's room and tax upon reservation. Cancellations made within 7 days of check-in will be charged one night's room and tax.

## MORE INFORMATION

For more information about these programs, contact ACG at [education@gi.org](mailto:education@gi.org). Americans with Disabilities Act (ADA): Attendees of these programs who need additional reasonable accommodations or who have special needs (including dietary needs) should contact the ACG office at [registration@gi.org](mailto:registration@gi.org) no later than **July 28, 2026**.



AMERICAN COLLEGE OF GASTROENTEROLOGY

11333 Woodglenn Drive, Suite 100  
North Bethesda, MD 20852



REGISTER BY  
JULY 28  
AND SAVE!  
[meetings.gi.org](https://meetings.gi.org)

# 2026

## ACG'S OBESITY AND METABOLIC DISORDERS SCHOOL & **ACG/VGS/MASGNA REGIONAL POSTGRADUATE COURSE**

**AUGUST 28-30, 2026** | WILLIAMSBURG LODGE  
WILLIAMSBURG, VA



Celebrate America's Semiquincentennial in historic  
Colonial Williamsburg!