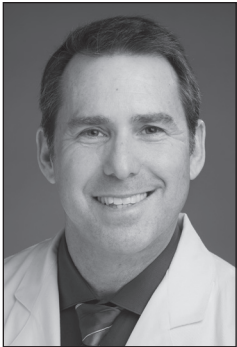


Community Service Award

The Community Service Award is bestowed upon an ACG Allied Health Member, Resident Member, Trainee Member, Member, Fellow, or Master who has initiated or has been involved in volunteer programs or has provided extensive volunteer service post-training. The service must have been performed on a completely voluntary basis and not for the completion of training or position requirements. Such service may include but is not limited to the following: community education programs (e.g., colon cancer awareness); working in free clinics; mentoring advocacy groups or local government committees; teaching in under-served schools related to health education; and political work on committees for comprehensive health insurance or other issues.

2018 Recipient

Louis J. Wilson, MD, FACC



Louis J Wilson, MD, FACC, is a native of Dallas, Texas. He received his Doctor of Medicine from U.T. Southwestern Medical School and has been in practice in Wichita Falls for 21 years. Dr. Wilson has been very active in the American College of Gastroenterology (ACG).

In 2016 and 2017, he was Director of the ACG Practice Management Course and is the current Chair of the Practice Management Committee. He is the current president-elect for the Texas Society of Gastroenterology and Endoscopy and has authored dozens of scientific posters and papers.

Throughout his career, Dr. Wilson has had a passion for effective disaster relief and has acted as medical director or participant in numerous disaster relief efforts including the 2001 Hurricane Mitch in Central America, the 2005 tsunami in Eastern Sri Lanka, the 2010 earthquake in Haiti and the 2017 Hurricane Harvey in Houston.

While filming a pilot for a proposed television series “Relief Nation,” he personally interviewed and filmed the efforts of dozens of humanitarians doing a wide range of work. These experiences have informed his view that the most effective humanitarian responses are those that temporarily support recovery and then encourage rather than replace local actions by those most intimately affected.